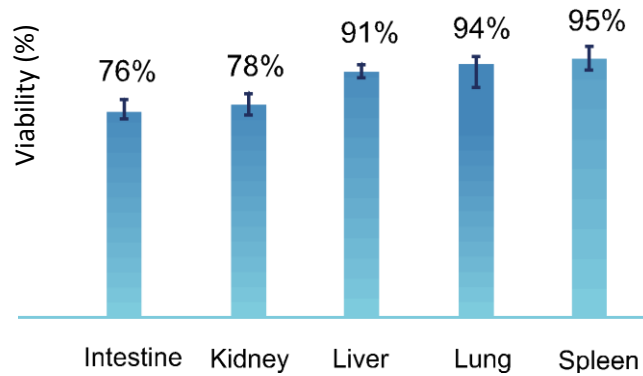
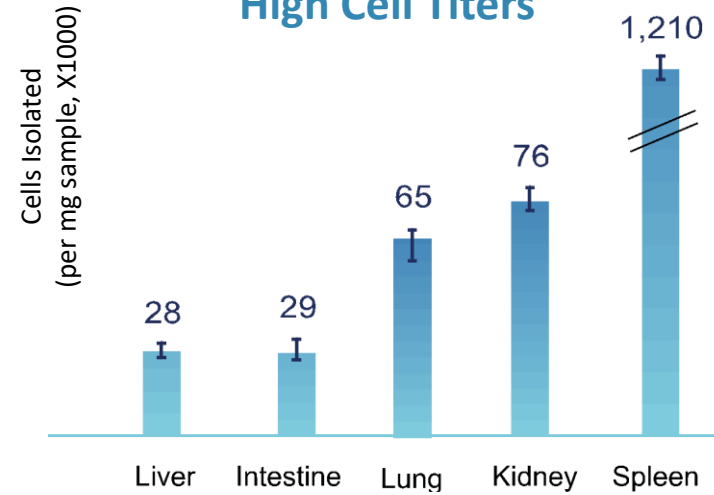




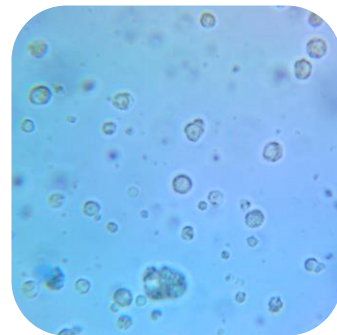
High Cell Viabilities



High Cell Titers

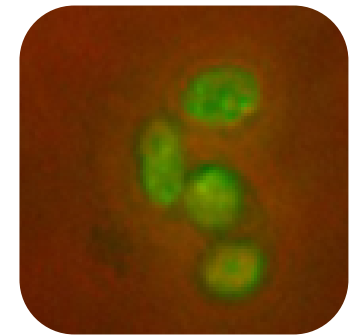


- Reproducible results
- Customizable protocols
- Improve success rates for precious samples
- Outputs single cell suspensions, ready for downstream processing



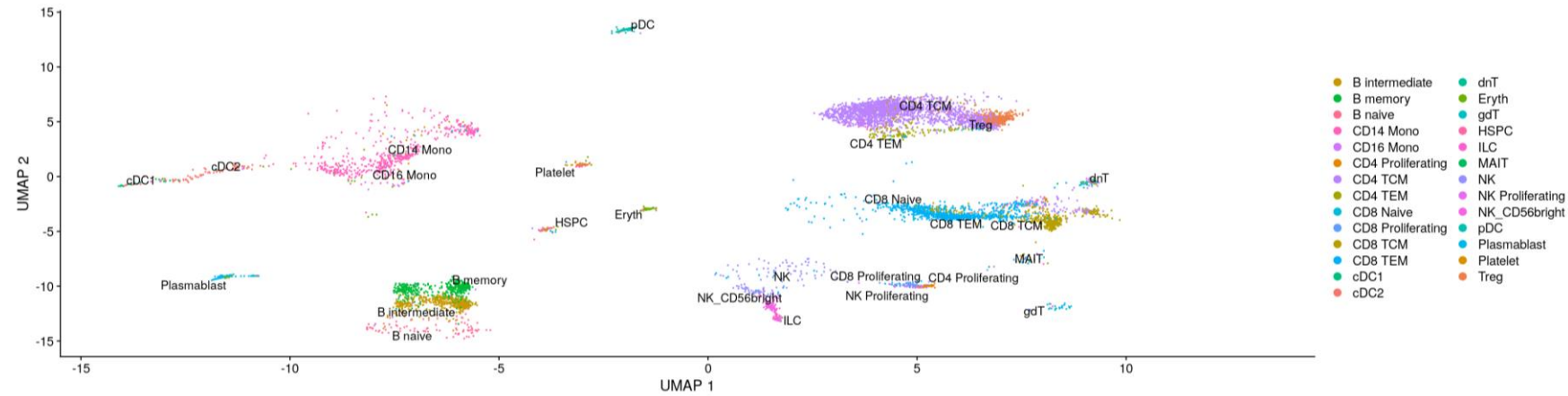
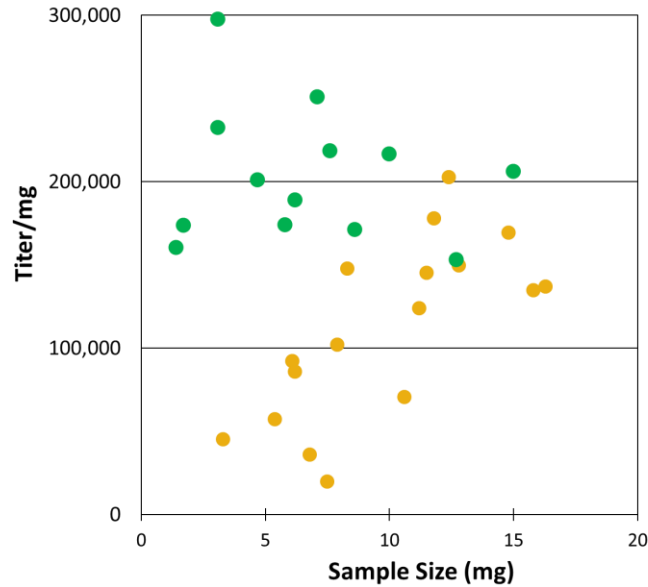
Mouse, lung. Trypan Blue stained.

- Fresh, flash frozen, OCT tissue
- Same fast process for most tissues
- 30-60 min (cells) 7 mins (nuclei)



Mouse, small intestine. DAPI stained composite image. Courtesy A. Minoda, RIKEN.

singulator 100™



Dissociation of small samples with the NIC+ cartridges. Yield of mouse kidney nuclei per mg vs. sample size is shown for standard (yellow) and NIC+ (green) cartridges.

scRNA-Seq of TILs.

Human lung samples were dissociated with the Singulator 100 with the cell isolation cartridges, and TILs purified by magnetic separation (StemCells) before scRNA-Seq library construction with a Chromium. 7,676 TIL cells were sequenced with analysis by Azimuth using the PBMC data set.

singulator 100™



- No specialized training to start producing high-quality cells & nuclei
- Improve success rates for precious samples with standardized protocols
- Outputs single cell and nuclei suspensions, ready for downstream processing