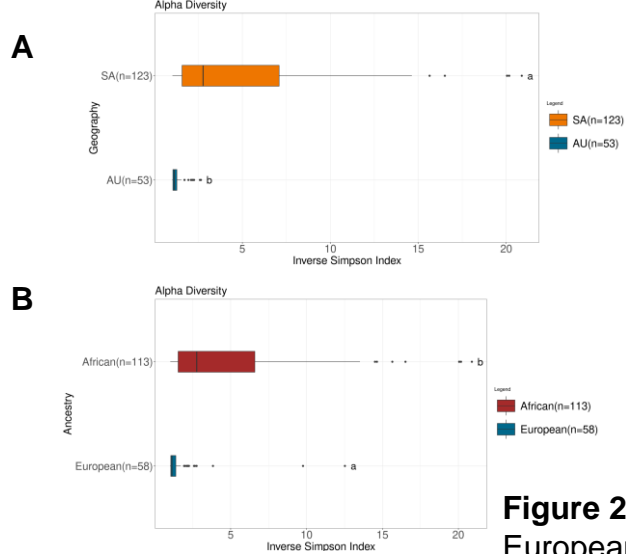


# Shotgun microbial profiling reveals geo-ancestral disparities in aggressive prostate cancer

**Figure 1:** Geography is a significant driver of microbial richness, species richness.

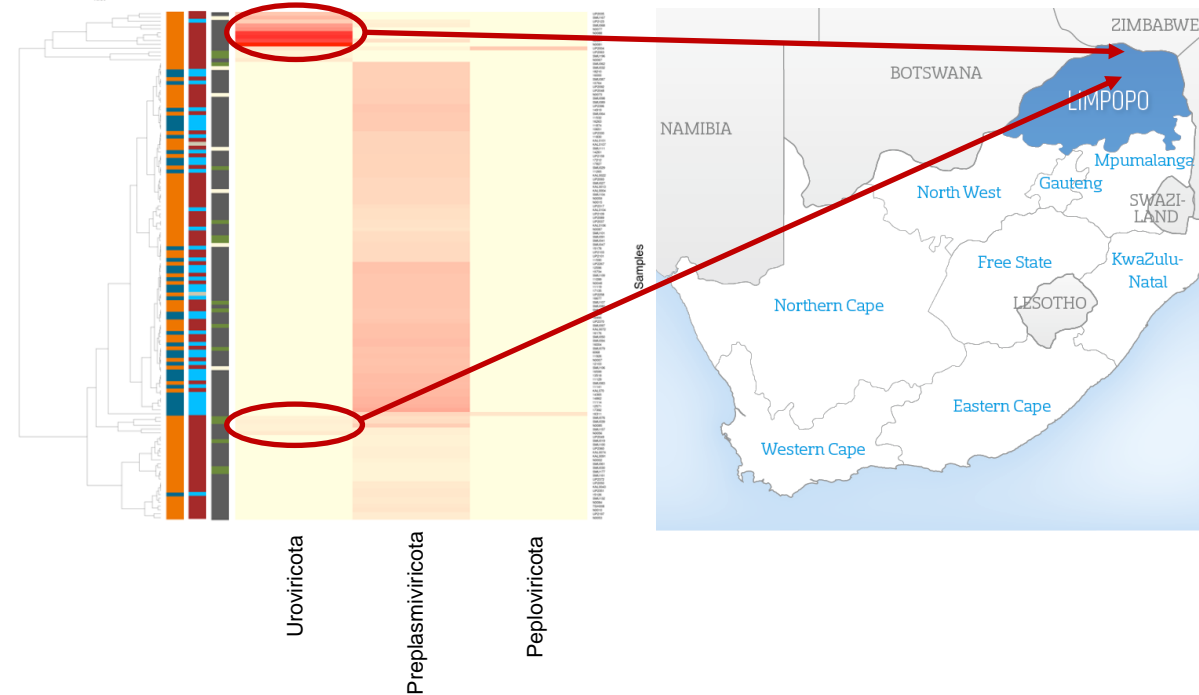
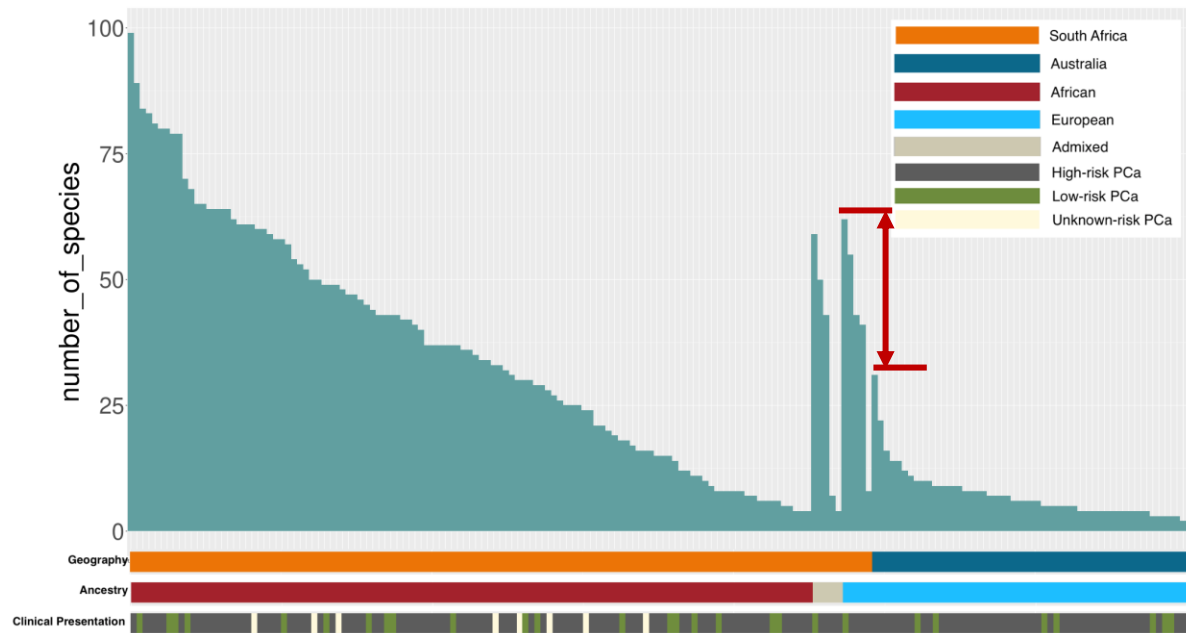


Analysis of variance (ANOVA):  
F-value, P-value

**SA – AU:**  
**32.05, 6.1e-08**

**African – European:**  
**24.41, 1.86e-06**

**Figure 2:** The number of microbiome species for European in South Africa is higher than in Australia.



**Figure 3:** Some African patients with Uroviricota phylum (7 bacteriophages species) reportedly resided within the most northerly Limpopo Province, which is significantly different (p-value = 0.0009) to the cases with non-Uroviricota presenting tumours.

Kaitao Lai  
School of Medical Sciences,  
The University of Sydney  
kaitao.lai@sydney.edu.au

Poster number: **42**